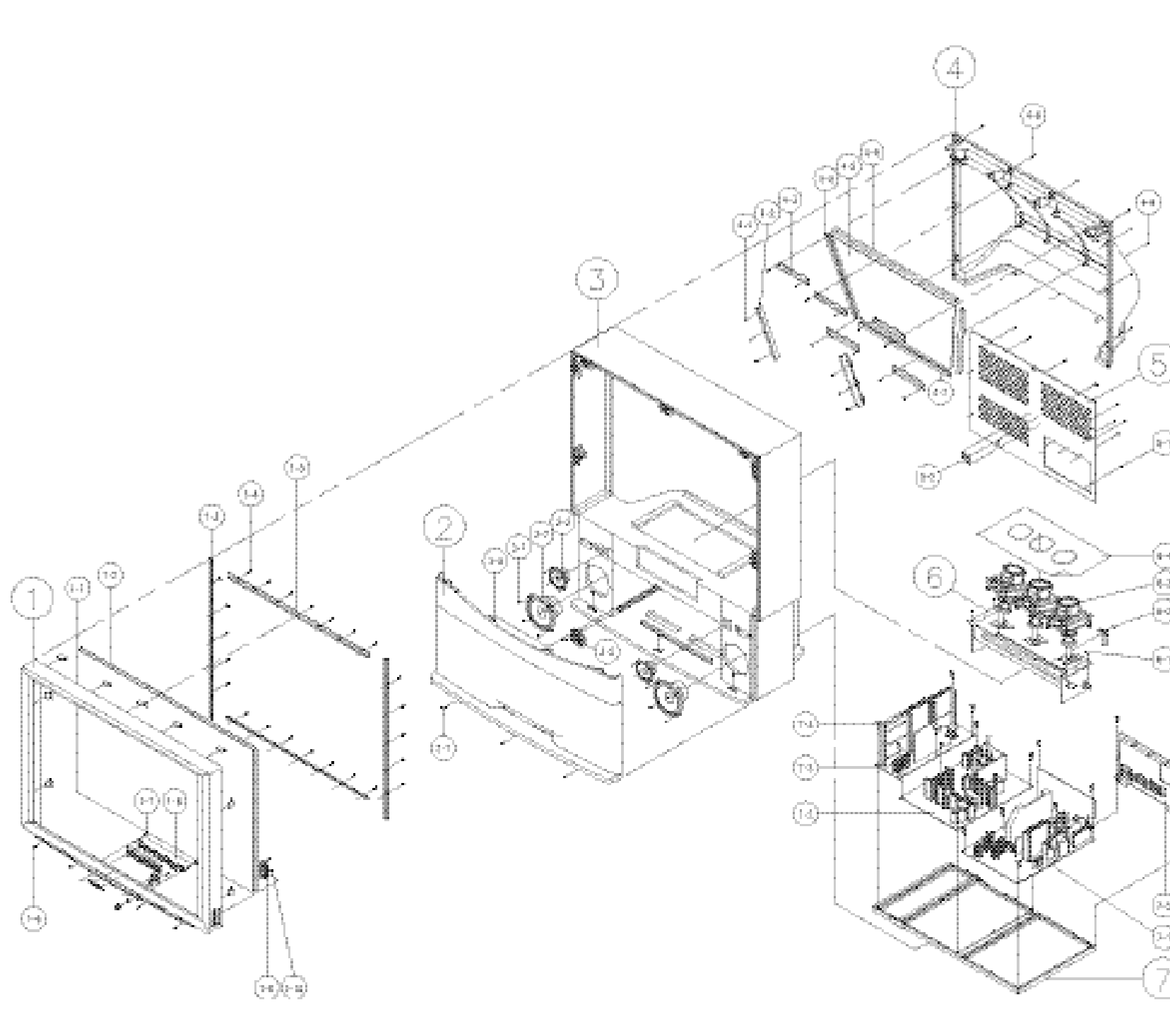


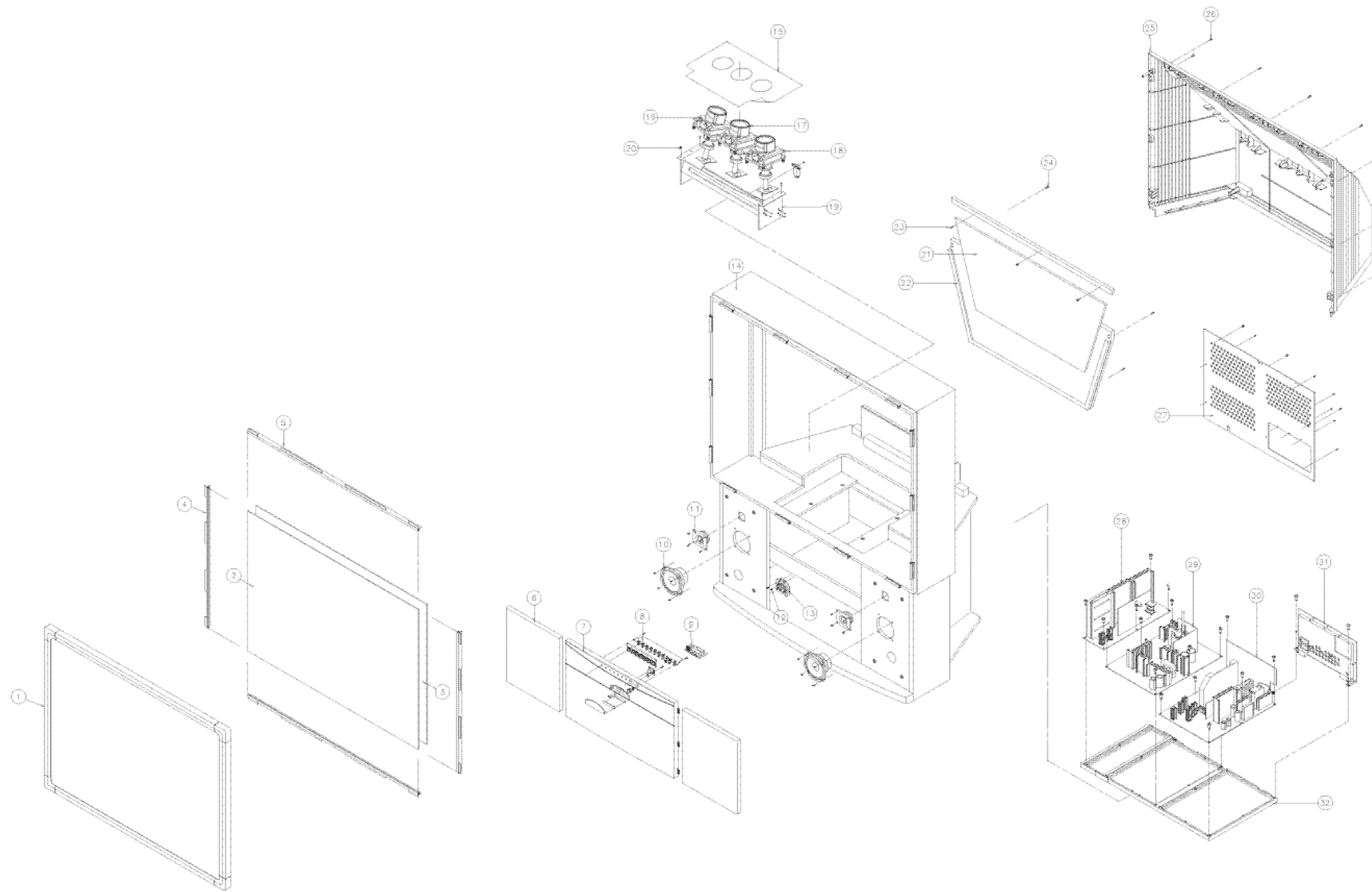
6. Exploded View & Parts List

6-1 PCJ522R



No.	DESCRIPTION	CODE - NO	SPECIFICATION	Q'TY
1	ASSY-CABINET,FRONT	AA91-10419M	HIPS HB BLK	1
1-1	SUN-SCREEN	AA67-70048A	52 PMMA	1
1-2	SCREEN-TINT	AA67-70065A	52 DNP	1
1-3	HOLDER-SCREEN	AA61-00081B	A6063 EXTR. L754	2
1-4	SCREW-TAPTITE	AA60-10011A	HH + M4 L12 ZPC	24
1-5	HOLDER-SCREEN	AA61-00081C	A6063 EXTR. L1052	2
1-6	SCREW-WOOD	AA60-10050W	W/H + M4 L20 ZPC	4
1-7	SCREW-TAPPING	AA60-10002A	RH + M4 L12 ZPC OD14	2
1-8	ASSY-PCB,CONTROL	AA95-00265B	P51A	1
1-9	ASSY-PCB,A/V FRONT	AA95-00290C	P51A	1
1-10	SCREW-TAPTITE	AA60-10011A	HH + M4 L12 ZPC	2
2	CABINET-FRONT,BOTTOM	AA64-31357A	ABS V0 BLK	1
2-1	SCREW-TAPTITE	AA60-10011A	HH + M4 L12 ZPC	3
3	ASSY-CABINET,MID	AA91-00205A	WOOD	1
3-1	SCREW-WOOD	AA60-10051A	PH + M4 L16 ZPC	24
3-2	SPEAKER	3001-001107	20W 8ohm 95+-2DB	2
3-3	SPEAKER	3001-000176	30W 8ohm 93+-2DB	2
3-4	SCREW-WOOD	AA60-10050W	W/H + M4 L20 ZPC	2
3-5	MODULE-FOCUS,PACK	AA59-40003P	F300,NTSC,43,64x62,	1
4	CABINET-BACK,TOP	AA64-30714A	HIPS HB BLK	1
4-1	SCREW-TAPTITE	6003-001026	RH + M4 L15 ZPC	16
4-2	BRACKET-MIRROR,C	AA61-10242A	SECC T1.0	2
4-3	BRACKET-MIRROR	AA61-10361A	SECC T1.0	5
4-4	SPACER-MIRROR	AA63-00021G	PVC BLK L420	2
4-5	MIRROR-BACK SURFACE	AA67-20026A	52 GLASS T3	1
4-6	SPACER-MIRROR	AA63-00021G	PVC BLK L970	1
4-7	SPACER-MIRROR	AA63-00021G	PVC BLK L680	1
4-8	SCREW-WOOD	AA60-10050W	W/H + M4 L20 ZPC	8
5	CABINET-BACK,BOARD	AA64-00501A	HIPS V0 BLK	1
5-1	SCREW-WOOD	AA60-10050W	W/H + M4 L20 ZPC	14
5-2	LABEL-WARNING	AA68-00233A	A/P 90(G)	1
6	ASSY-BRACKET,MAIN	AA91-00241A	SECC T1.6	1
6-1	SCREW-ASSY	AA60-10001A	WP + M6 L20 SCM30C	4
6-2	SCREW-TAPTITE	AA60-10011A	HH + M4 L12 ZPC	1
6-3	ASSY-CRT(R)	AA94-01640A	P16LNM07RJA,+380MG,7,BARE	1
6-3	ASSY-CRT(G)	AA94-01641A	P16LNM07HKA,+380MG,7,BARE	1
6-3	ASSY-CRT(B)	AA94-01642A	P16LNM07BMB,+380MG,7,BARE,	1
6-4	SPACER-COVER,DUST	AA60-00027A	SPONGE T2	1
7	HOLDER-CHASSIS	AA61-00051B	ABS V0 GRAY	1
7-1	ASSY-PCB,MAIN(OPT)	AA94-01636A	PCJ522RX/XAA,P51A,U.S	1
7-2	ASSY-PCB,SUB	AA94-01636A	PCJ522RX/XAA,P51A,U.S	1
7-3	ASSY-CONV.AMP	AA95-00055E	P51A	1
7-4	SCREW-TAPPING	6003-001023	RWH + B M3 L10 ZPC	21
7-5	ASSY-TERMINAL,BOARD	AA91-00158H	HIPS V0 VLK	1

6-2 PCJ612R



No.	DESCRIPTION	CODE - NO	SPECIFICATION	Q'TY
1	ASS'Y-CABINET,MASK	AA91-00140E	HB BLK SEA PCJ612R	1
2	SUN-SCREEN	AA67-70057A	61' DNP 1283*973	1
3	SCREEN-TINT	AA67-70056A	61' DNP 1283*973	1
4	HOLDER-SCREEN	AA61-00079C	PCJ613R ABS HB BLK L945	2
5	HOLDER-SCREEN	AA61-00079B	PCJ613R ABS HB BLK L1255	2
6	COVER-FRONT,WOOD	AA63-00183A	WOOD 612R	2
7	ASS'Y-CABINET,BOT	AA91-00014G	VO DG707M ALL PCJ612R	1
8	ASSY-PCB,CONTROL	AA95-00265B	P51A	1
9	ASSY-PCB,A/V FRONT	AA95-00290L	P51A	1
10	SPEAKER	3001-001107	20W 8ohm 95+-2DB	1
11	SPEAKER	3001-000176	30W 8ohm 93+-2DB	1
12	SCREW-TAPTITE	6003-001023	RWH + M3 L10 ZPC(YEL)	2
13	MODULE FOCUS-PACK	AA59-40003P	F300,NTSC,43.64X62,BK	1
14	ASS'Y-CABINET,MIDDLE	AA91-00207A	WOOD PCJ612R	1
15	SPACER-COVER,DUST	AA60-00027B	SPONGE T2.0 612R	1
16	ASSY-CRT(R)	AA94-01676A	P16LNM07RJA,+380MG,7,BARE,	1
17	ASSY-CRT(G)	AA94-01677A	P16LNM07HKA,+380MG,7,BARE,	1
18	ASSY-CRT(B)	AA94-01678A	P16LNM07BMB,+380MG,7,BARE	1
19	ASS'Y-BRACKET,MAIN	AA91-00241A	SECC T1.6 7 53J5	1
20	SCREW-TAPTITE	AA60-10011A	PC M4 L12 ZPC(BLK)	8
21	MIRROR-BACK	AA67-00020A	GLASS T3.0 1160*754*806	1
22	COVER-MIRROR,WOOD	AA63-00082A	PCH613R WOOD	1
23	SCREW-WOOD	AA60-10050W	10/H M4 L20 ZPC(BLK)	1
24	SCREW-WOOD	6005-001001	TH M4 L28 BLK SWRCH 18A	1
25	CABINET-BACK,TOP	AA4-31213B	HIPS HB BLK	1
26	SCREW-WOOD	AA60-10050W	W/H M4 20 ZPC(BLK)	13
27	CABINET-BACK,BOARD	AA64-00625A	HIPS VO BLK T3.0	1
28	ASSY-CONV,AMP	AA95-00055E	P51A	1
29	ASSY-SUB	AA95-00053F	P51A	1
30	ASSY-MAIN	AA95-00055E	P51A	1
31	ASS'Y-TERMINAL,BOARD	AA91-00158H	HIPS VO BLK PCJ612R	1
32	HOLDER-CHASSIS	AA61-00051B	ABS VO GRAY E2	1